



पत्तन, पोत परिवहन
एवं जलमार्ग मंत्रालय
MINISTRY OF
PORTS, SHIPPING
AND WATERWAYS



75
Azadi Ka
Amrit Mahotsav



Cruise
to
Mangaluru
The jewel of the west coast



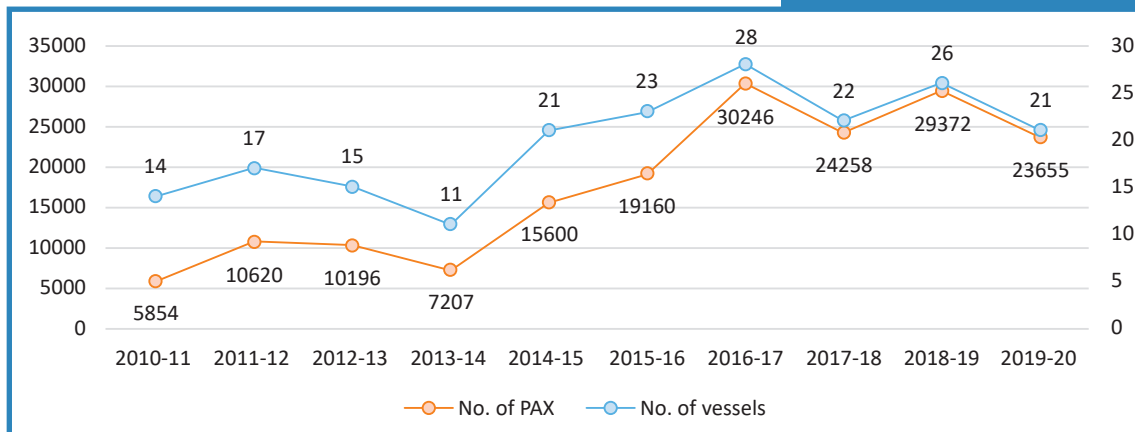
Cruise Tourism at 
New Mangalore Port

Cruise Tourism at New Mangalore Port



Sandwiched between the Arabian Sea and the Western Ghats, Mangaluru is a fabulous tourist destination - having exotic beaches, ancient temples, churches, vibrant fish markets, cashew processing centres, tile factories, boat building units and malls for shopping. For thousands of foreign cruise tourists, New Mangalore Port (NMP) provides a safe and convenient access to this rich assortment of attractions in the region.

New Mangalore Port is a port of call for 7 cruise lines, including AIDA, Norwegian (Seabourn), Celebrity, Silver Seas and Costa. With constant improvements in port and tourism infrastructure in the region, the number of calls made by cruise vessels in the port has increased over years - from 1 cruise vessel during 2002-03 to an average of 24 every cruise season during 2017 to 2020.



Facilities at the Port: Berthing & Parking

The port provides priority berthing for cruise vessels. It has 3 piers available for cruise vessels – Berth no. 2, 3 and 4, with Berth no. 4 being the primary cruise berth since it has an adjoining lounge area. Vessels with upto 9.5m draft and 311m LOA can be accommodated at the cruise berth. The aptly selected berth provides parking space for buses, cars and auto rickshaws right outside the cruise lounge.

Cruise
to
Mangaluru
The jewel of the west coast



Facilities at the Port: Cruise Lounge

Dedicated air-conditioned cruise lounge spread over 2150 sq m welcomes the cruise passengers and houses all the facilities required by them.



Facilities at the Port: Clearances

Cruise
to
Mangaluru
The jewel of the west coast

Baggage scanners have been placed for both, embarkation and disembarkation.



e-VISA clearance on arrival is provided at 11 Immigration counters – being increased to 75 for fast immigration checks.



Facilities at the Port: Tourism Help Desk

Themed help desk by Department of Tourism, Government of Karnataka showcases local attractions and acts as the point of outreach for sharing information about local tourism attractions.



Pre-paid Taxi Stand operated by Department of Tourism, Government of Karnataka ensures hassle-free experience of booking taxis with options of selecting packages or taking customized routes as well.



Facilities at the Port: Wi-Fi & Currency

Cruise to Mangaluru

The jewel of the west coast



The port provides Free Wi-Fi for cruise passengers as well as crew through a dedicated counter staffed by students of local colleges trained to find and share the relevant information.

In the background, the IT team constantly monitors the system for speed as well as security.

A dedicated counter provides Currency Exchange services through external vendors.

An ATM situated right outside the cruise lounge can be used by the passengers and the crew for easy access to local currency.



Cruise to Mangaluru

The jewel of the west coast

Facilities at the Port: Handicrafts Sales Outlet

The cruise passengers enjoy the assortment of local handicrafts, clothing and Jewellery at the Handicrafts Sales Outlet in the cruise lounge.



Shore Excursions in Tulu Nadu

Cruise to Mangaluru

The jewel of the west coast



Tulu Nadu, the region covering Dakshina Kannada and Udupi districts is abundant in heritage and is an abode to vibrant nature. Due to its rich history spanning centuries and involving different dynasties, religions and their interactions, it has a diverse assortment of tourism attractions and experiences to offer.

The tour operators at Mangaluru have two decades' experience in curating tours and taking cruise passengers for shore excursions in the region.

Their professionally trained guides accompany the tourists and share their knowledge about the art and culture of the region.

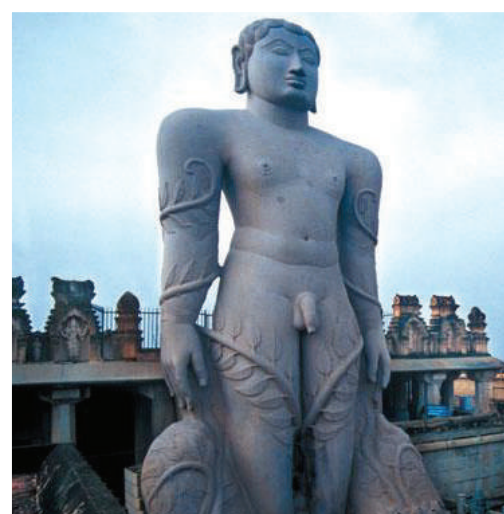


Cruise to Mangaluru

The jewel of the west coast

Heli-Tourism: Bringing Places Closer

Heli-taxi service from the cruise berth has made famous tourist attractions such as Belur-Halebeedu, world famous stone temples (below), Jog Falls, 3rd highest waterfall in India (bottom left) and Shravanabelagola, Asia's largest monolithic statue (bottom centre) reachable for the cruise passengers.



Cruise Tourism after COVID 19

Cruise
to
Mangaluru
The jewel of the west coast



After a year's gap due to Covid 19, the cruise season at New Mangalore Port began with 'Europa 2' vessel which called at the port on 28th November 2022. The port would be hosting 8 cruise vessels in the 2022-23 cruise season beginning in the last week of November 2022 and lasting till the last week of May 2023.

The Port ensured all arrangements as per the COVID protocols issued by the MoH&FW from time to time, and undertook new initiatives for providing the cruise passengers a great experience at the port.

Traditional Welcome at the Cruise Berth

The cruise passengers are welcomed using traditional local percussions (chande) and artists in Yakshagana dress at the berth. The passengers have a great time taking selfies with the artists.



Arrangements at the Cruise Berth

The cruise berth is decorated with carpet to an air conditioned pagoda at the entrance of the cruise lounge and potted plants all along the carpet. The pagoda has 2 CISF personnel and 2 students from local university welcoming the cruise passengers.

Cruise
to
Mangaluru
The jewel of the west coast



Deploying Students for Hospitality

The port has entered into an MoU with a local university having institutes for hospitality as well as ports and shipping. For the students' learning and practical experience, the university sends 10-15 students for every cruise call. The students' presence generates a hospitable atmosphere.



New Season, New Experiences

The port undertakes quick and low/no cost experiments through new initiatives to see what sticks with the cruise passengers.

Cruise
to
Mangaluru
The jewel of the west coast



Local university students are invited to arrange cultural programmes for cruise passengers. An extra air conditioned pagoda with stage and chairs are setup for the same.

A dedicated Meditation Centre, set up using temporary infrastructure in the cruise lounge itself, in association with Department of AYUSH provides free guided meditation experience to the cruise passengers.



Parting Gifts: A Farewell to Remember



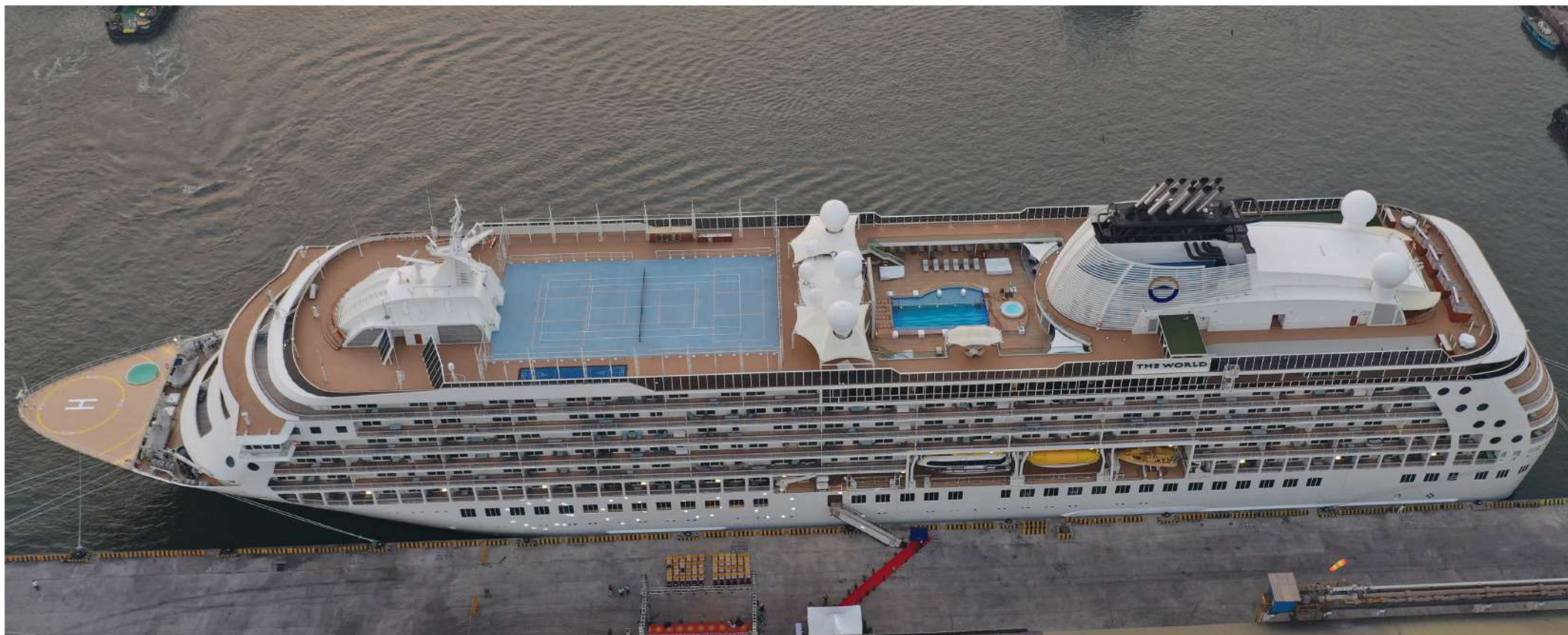
Parting gifts are presented to the cruise passengers before their embarkation on the vessel. The pagoda set up at the cruise lounge entrance is used for handing over these gifts to the passengers by the students.



Hosting 'The World' at the Port

'The World' - a private residential cruise vessel called at the Port on January 13th which stayed at the port for 3 days. Various cultural programmes and facilities were arranged at the cruise lounge for the cruise passengers.

Cruise
to
Mangaluru
The jewel of the west coast

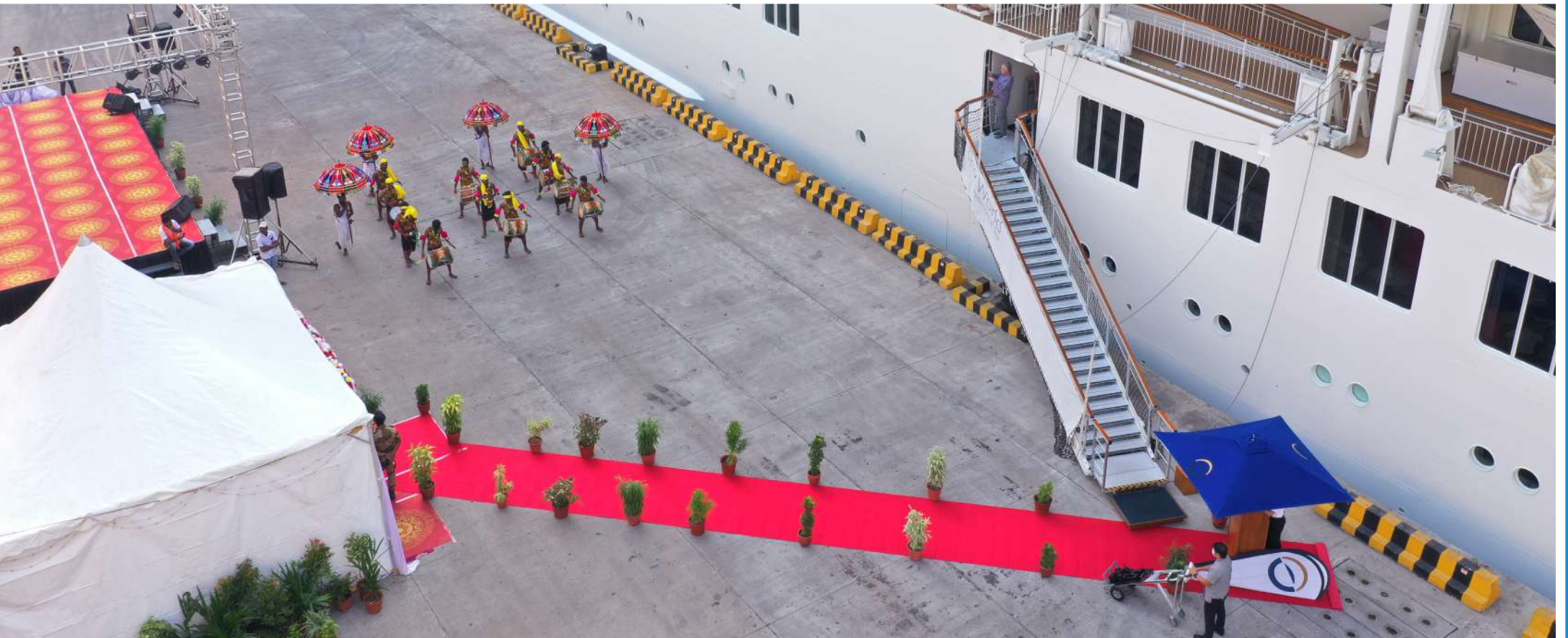


Cruise to Mangaluru

The jewel of the west coast

‘The World’ – Traditional Welcome

The cruise and its passengers were welcomed with a Dollu Kunitha performance by a professional troupe travelling all the way from North Karnataka. It is a popular folk dance associated with the worship of Sree Beeralingeswara, who is considered a form of Lord Shiva, practiced by Kuruba Gowda community.



'The World' – Welcoming the Captain

The Chairman, New Mangalore Port Authority personally welcomed the Captain of the vessel and the passengers who had gathered for the evening cultural programme. The Chairman presented a memento to the captain and handed over parting gifts for each passenger on the vessel.

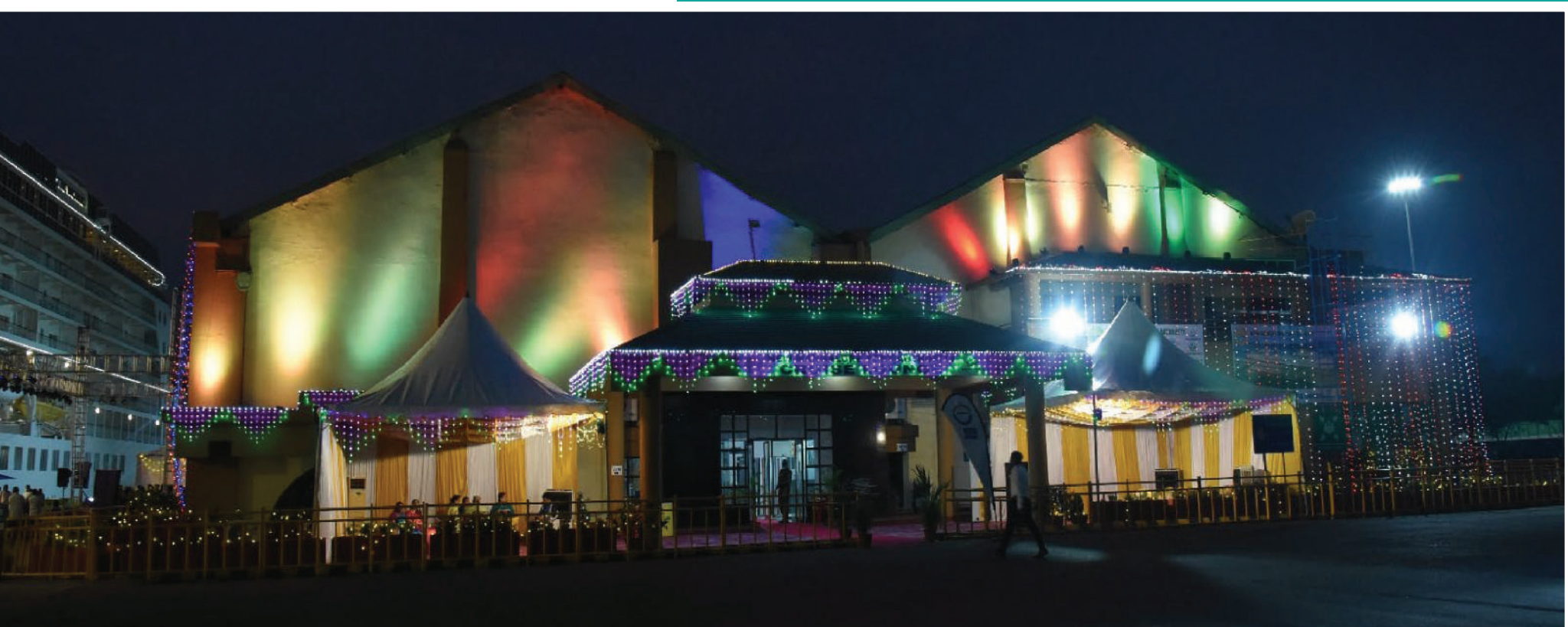


Cruise
to
Mangaluru
The jewel of the west coast



‘The World’ – Festive Atmosphere at The Port

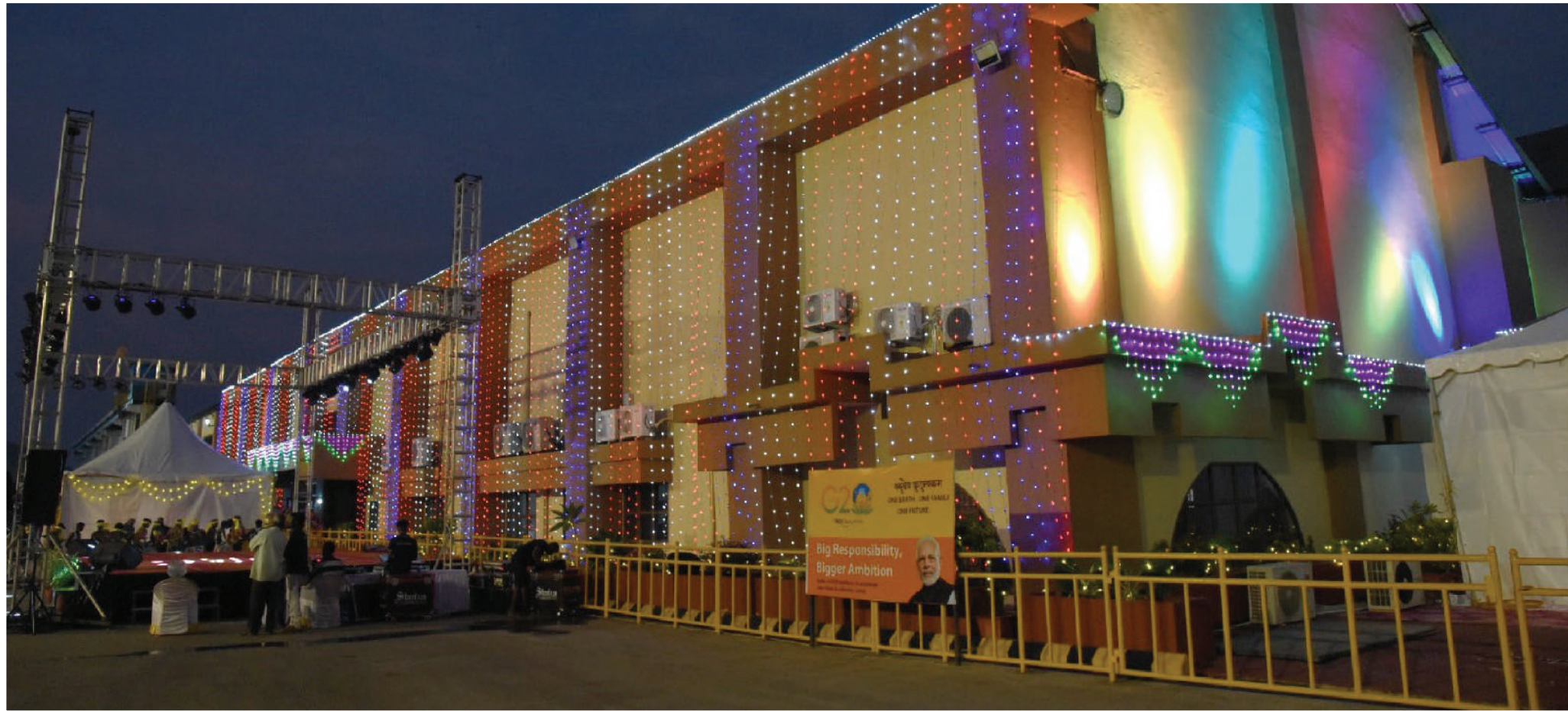
The port had created a festive atmosphere on the cruise berth by decorating the cruise lounge, the berth and the path to the main gate with colorful lights.



South side of the Cruise Lounge

'The World' – Cultural Programme – Day 1

Cruise
to
Mangaluru
The jewel of the west coast



West side of the Cruise Lounge

‘The World’ – Cultural Programme – Day 1



Top view of the cruise berth, with vessel on the top and cruise lounge at the bottom

On the Day 1, the Cultural Programme consisted of various formations of Dollu Kunitha performances by a professional troupe from North Karnataka. The performance was arranged by the port through the Ministry of Tourism, Government of India. The open stage with lights was setup at the cruise berth along the vessel enabling passengers on board to enjoy the performance from the vessel itself.



Top view of the Dollu Kunitha performance on the open stage set up at the cruise berth

'The World' – Cultural Programme – Day 1

Cruise
to
Mangaluru
The jewel of the west coast



Dolu Kunitha Performance

‘The World’ – Cultural Programme – Day 2

On the Day 2, the Cultural Programme consisted of Bharatnatyam, Mohiniyattam, Kathak and Navarasam performances, which were arranged by the port through students of a local university and an association promoting local arts and culture.



Kathak Performance

'The World' – Cultural Programme – Day 2

Cruise 
to
Mangaluru
The jewel of the west coast



Bharatnatyam Performance



Mohiniyattam Performance

‘The World’ – Cultural Programme – Day 2



Navarasam Performance

'The World' – Cultural Programme – Day 2

Cruise 
to
Mangaluru
The jewel of the west coast



Bharatnatyam Performance

‘The World’ – Cultural Programme – Day 2

Cruise passengers enjoying local snacks and hot beverages while watching cultural performances.



'The World' – Cultural Programme – Day 3

On the Day 3, the Cultural Programme consisted of traditional percussions (Chande), Navadurga Bharatnatyam, Hulivesha, and local fisherfolk dance performances, which were arranged by the port through Department of Tourism, Government of Karnataka.

Cruise
to
Mangaluru
The jewel of the west coast



Chande Performance



Hulivesha Performance



Navadurga Bharatnatyam Performance

'The World' – Cultural Programme – Day 3

Cruise 
to
Mangaluru
The jewel of the west coast



Navadurga Bharatnatyam Performance

‘The World’ – Cultural Programme – Day 3

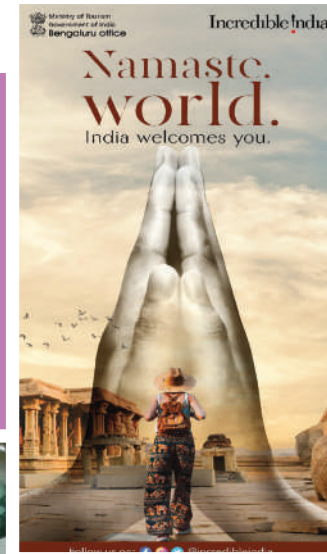
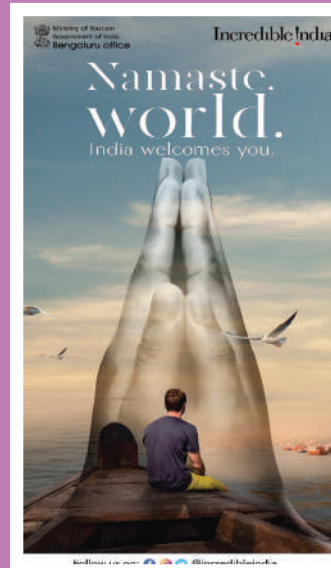


Local Fisherfolk Dance Performance

Attractive Signages in Cruise Lounge

Cruise to Mangaluru

The jewel of the west coast



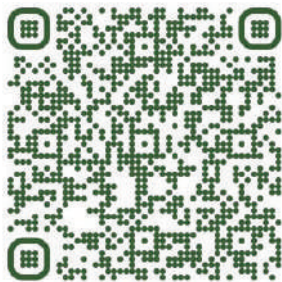
Cruise to Mangaluru

The jewel of the west coast

Scan QR Code for
Video Testimonials
by Cruise Passengers



*“Well organized and clean port...
surprised by the traditional welcome
and excellent arrangements”*



“Happy to be here... so well organized”

Experience & Testimonials



QR Code displayed at the cruise lounge for feedback

Appreciation Letter from 'The World'



The World
Residences at Sea

15 JANUARY 2023

Dr. Venkata Ramana Akkarahu
Chairman Of The Board at NEW MANGALORE PORT TRUST

Mr. Ajay Singh Bist
Senior Executive for New Mangalore – ISS Shipping India Pvt. Ltd.

Dear Sirs,

On behalf of the community of *The World*, I want to extend our appreciation for port arrangements made to welcome our good vessel into your beautiful destination.

Residents, Guests and Crew have been delighted with port installations, the amenities offered, the meditation centre, and above all, with the fascinating shows that have provided a window into the rich Indian culture through the talented performers.

The efforts taken by the Port Authorities and Stakeholders and the constant and efficient support of our dedicated Port Agents, have made of this a truly memorable experience.

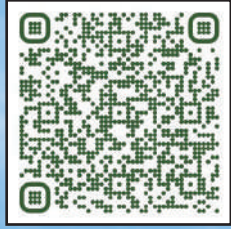
We wish success and all your future efforts and look forward to visiting again.

Thank you and Best regards,

Mauro Betancourt-Alvarado
Clearance Officer
The World



*Scan QR Code for
Experiencing the Cruise Tourism
at New Mangalore Port*



'The World' comes to Mangaluru



NEW MANGALORE PORT AUTHORITY

Panambur, Mangaluru – 575 010

Tel: 0824-2407300 | Fax: 0824-2408390

E-mail: chairman@nmpt.gov.in | Website: www.newmangaloreport.gov.in

